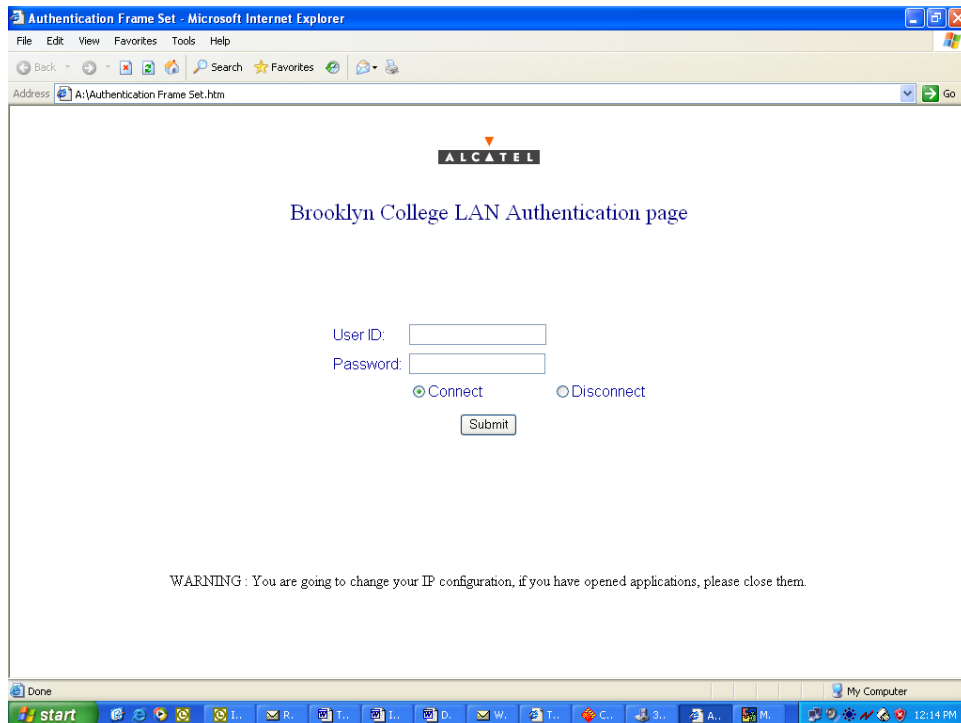


## Accessing The College Network Via An Authenticated Network Port

An authenticated network port (like wireless access) requires that the user provide their Brooklyn College email ID and password to obtain access to the network. This allows the college to ensure that only authorized users connect to our networks and allows I.T.S. to identify the user in case we need to contact them with regard to security issues or abuse. To use an authenticated jack:

1. Turn on the computer.
2. Make sure the computer is connected to the network jack with an Ethernet category-5 patch cable.
3. Make sure you are connected by checking the Ethernet status in the taskbar. If this option is not available, click on Start → Settings → Network Connections → Ethernet.
4. Open an Internet Browser (either Explorer or Netscape).
5. The Brooklyn College LAN Authentication page window will appear on the screen:



6. In the User ID dialog box, type your BC email user id. For example, if your email is **Lanuser@Brooklyn.cuny.edu**, you should type just **Lanuser**
7. If you are not sure what your BC email ID is, you can view it in the BC WebCentral Portal at <http://portal.brooklyn.edu>
8. In the Password dialog box, type your BC email password. Note: the password is case sensitive.
9. The authentication process will ask you to accept the security certificate. Click **Yes** to accept the security certificate.
10. Wait couple of minutes until the IP configuration is completed.
11. As soon as the IP configuration is completed, close the internet browser..
12. Reopen an internet browser again (Explore or Netscape) and you should be connected to the BC Network.

Any problems or questions, please contact the I.T.S. Instructional Tech Team (I.T.T.) at:  
**718-758-8282.**

**Note: Mac OS X users must renew the IP manually after a successful logon. You can do this by opening System Preferences → Network → Show → Built-in Ethernet → click on 'Renew DHCP Lease'.**